

Setter

Price Report

October 2019

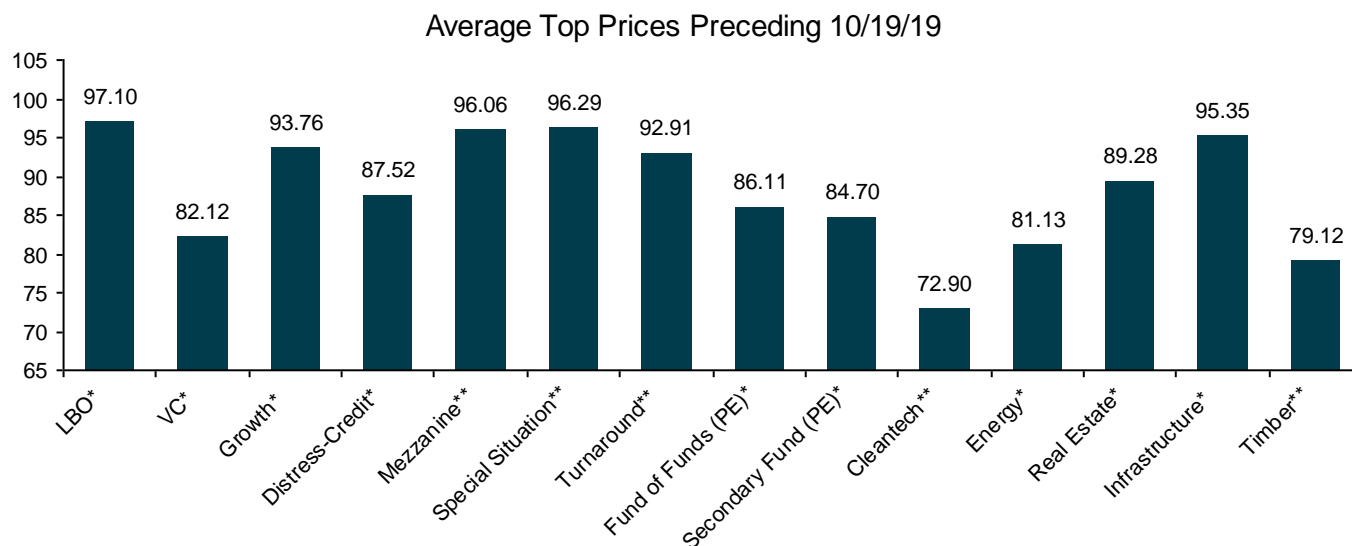
First in the Secondary Market.

Setter Price Report

Price Analysis of Different Fund Strategies

The below data records the average of top prices across various alternative asset classes and time intervals. The average top price is generally derived from prices that Setter observed over the preceding 90 day period through actual bids or indications given by the 1800+ buyers covered by Setter.

Please note that Setter receives more prices from buyers for the more saleable funds (Setter Liquidity Rating of 'Good', 'Very Good' and 'Excellent'). Since these more saleable funds tend to price better than less saleable funds, average prices in this report may be biased towards higher priced funds. Also note that the funds priced in a given period will differ in vintage, geographic focus, etc. which can influence the average price for that period. Finally, certain strategies like cleantech and distress-credit are priced less frequently which in turn causes their average prices to be more variable



Changes in Prices

Oct 19, 2018 vs Oct 19, 2019

Type	Funds Priced	Average IRR	Average Multiple	Starting Price	Ending Price	Price Change	
LBO*	838	14.62	1.46	95.63	97.10	1.55%	▲
VC*	196	18.14	1.93	73.99	82.12	10.99%	▲
Growth*	136	16.66	1.56	89.33	93.76	4.95%	▲
Distress-Credit*	105	9.66	1.41	95.23	87.52	-8.10%	▼
Mezzanine**	49	18.31	1.32	92.77	96.06	3.55%	▲
Special Situation**	32	15.66	1.34	94.64	96.29	1.74%	▲
Turnaround**	27	16.95	1.36	99.58	92.91	-6.70%	▼
Fund of Funds (PE)*	345	11.19	1.50	87.65	86.11	-1.76%	▼
Secondary Fund (PE)*	63	22.69	1.37	84.58	84.70	0.14%	▲
Cleantech**	34	1.08	1.10	67.36	72.90	8.22%	▲
Energy*	124	12.42	1.23	89.46	81.13	-9.31%	▼
Real Estate*	230	11.68	1.44	92.44	89.28	-3.43%	▼
Infrastructure*	107	10.03	1.34	86.96	95.35	9.65%	▲
Timber**	22	4.72	1.51	83.50	79.12	-5.25%	▼

*Starting Price and Ending Price are the average top prices of the 90 days preceding these two dates.

**Starting Price and Ending Price are the average top prices of the 365 days preceding these two dates.

Setter Price Report

Average Top Prices Over The 180 Days Preceding 10/19/19

Break Down by Geography

Geography	LBO	VC	Growth	Distress-Credit	Fund of Funds (PE)	Energy	Real Estate	Infra
N. America	97.95	78.41	92.58	88.02	83.34	80.24	90.61	94.25
W. Europe	99.70	85.10	102.71		91.71		82.17	98.66
Global	95.57			86.83	85.80	82.00	74.79	94.92
Asia	84.70	71.25	80.47		78.23		79.33	
Other	76.92		88.17		84.25		89.60	98.67

Break Down by Vintage

Vintage	LBO	VC	Growth	Distress-Credit	Fund of Funds (PE)	Energy	Real Estate	Infra
2017 - 2019	107.48		94.38	91.75	93.20		92.75	100.90
2014 - 2016	103.89	84.50	98.48	94.60	92.00	85.96	95.58	98.22
2010 - 2013	97.95	86.60	85.62	87.25	89.83	79.44	91.00	95.25
2009 and older	85.48	72.96	69.60	85.69	81.43	71.00	80.64	94.07

Break Down by Setter Liquidity Rating

Liquidity Rating	LBO	VC	Growth	Distress-Credit	Fund of Funds (PE)	Energy	Real Estate	Infra
Excellent	99.27		90.17			79.63		97.50
Very Good	99.20		96.71	92.08	82.25	79.57	84.05	99.71
Good	95.24	87.36	95.23	87.05	86.87	77.85	89.05	98.68
Unrated	93.85	77.03	86.14	90.38	83.88	86.71	87.71	91.50

Break Down by Percent Funded

Percent Funded	LBO	VC	Growth	Distress-Credit	Fund of Funds (PE)	Energy	Real Estate	Infra
0-25%	106.66	87.00	98.10		91.90		99.88	
25-50%	102.18		100.38		93.17		86.75	97.67
50-75%	99.94		94.58	96.60	88.00	84.64	93.40	100.33
75-100%	93.53	77.09	85.72	86.28	82.11	77.50	84.38	94.17

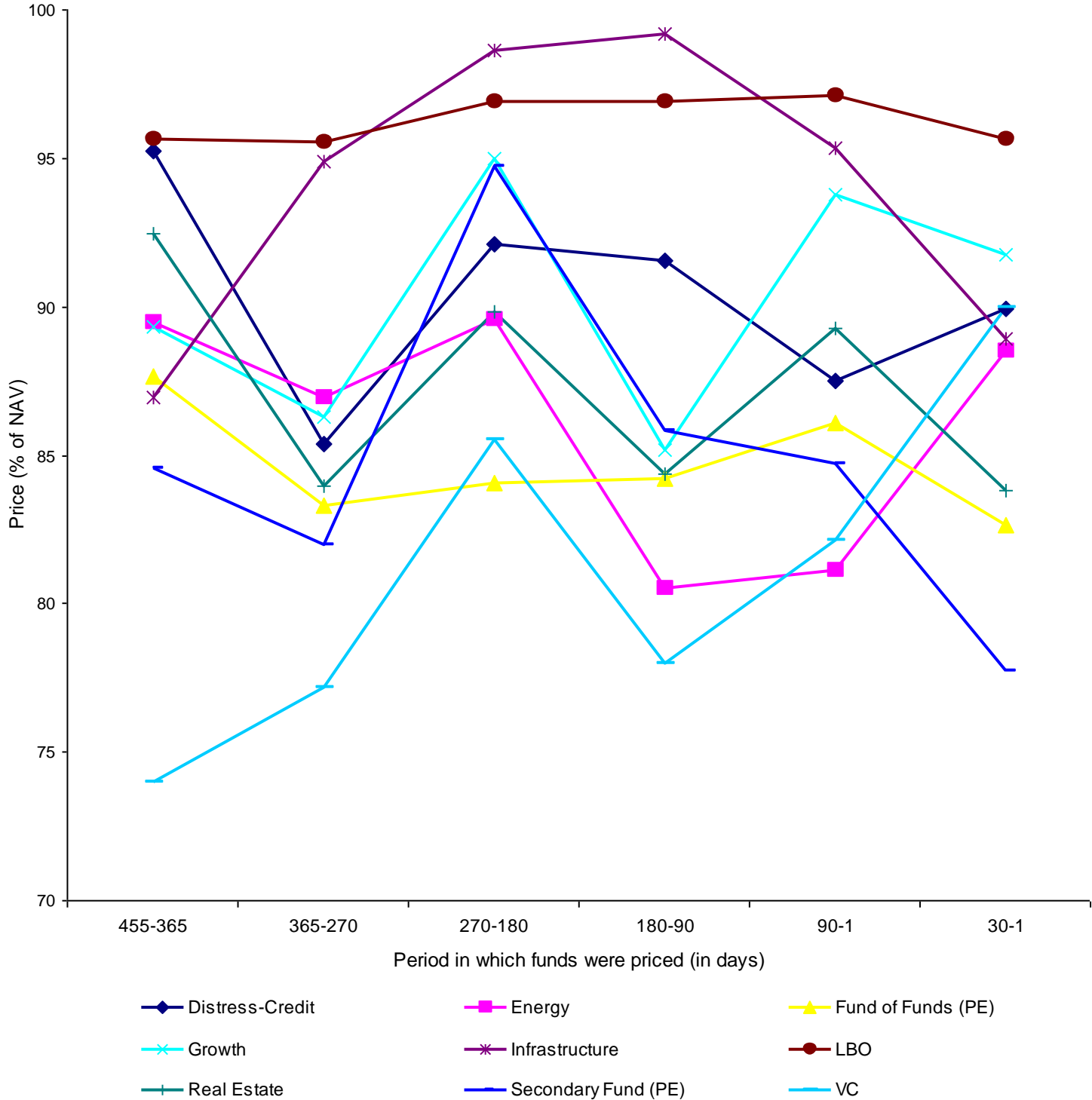
Break Down by Fund Size

Fund Size	LBO	VC	Growth	Distress-Credit	Fund of Funds (PE)	Energy	Real Estate	Infra
<\$500M	95.40	77.58	88.45	83.60	83.68	90.50	83.83	92.38
\$500M - \$1B	97.83	77.82	90.64	86.88	85.45	80.60	88.83	92.08
\$1B - \$2B	96.34	95.25	85.39	92.67	86.35	83.10	90.60	98.71
\$2B - \$5B	95.57		97.31	88.57		79.42	83.59	98.77
\$5B+	98.71			85.13		68.67	87.70	95.17

* areas are left blank when there is not enough data to draw a reliable average

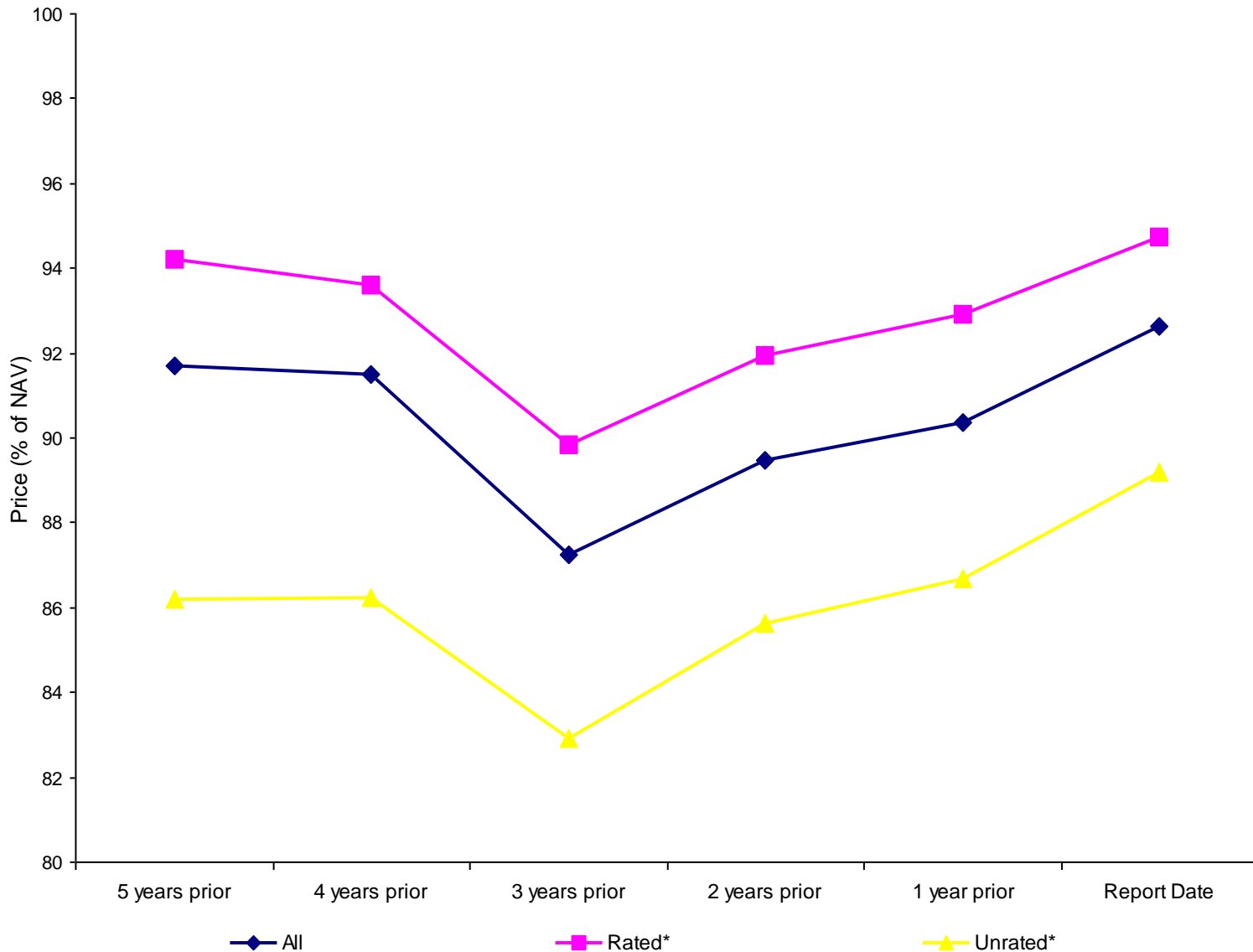
Setter Price Report

Price Movement over the Last Year



Setter Price Report

Price Movement of the Most Sought-After Funds



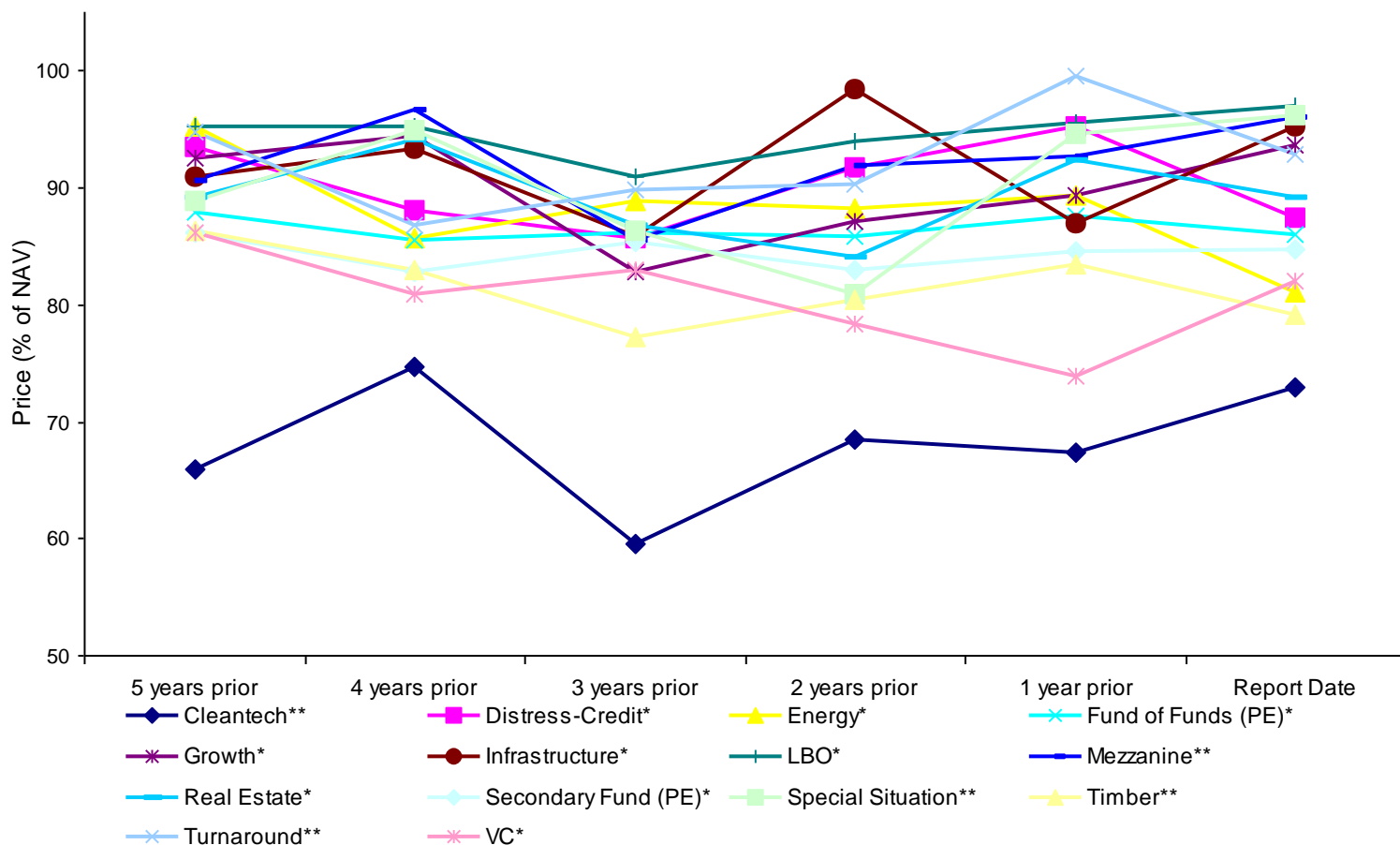
Broken Down By Liquidity Rating

	5 years prior (A)	4 years prior (B)	3 years prior (C)	2 years prior (D)	1 year prior (E)	Report Date (F)	Price change (E) to (F)
Unrated*	86.21	86.25	82.92	85.65	86.67	89.21	2.93% ▲
Rated*	94.20	93.59	89.86	91.93	92.90	94.73	1.97% ▲
All	91.70	91.50	87.24	89.48	90.36	92.64	2.52% ▲

* "Rated" funds are those with a Setter Liquidity Rating of Good, Very Good or Excellent, while "Unrated" funds have not achieved a rating. The Setter Liquidity Rating indicates how sought after and saleable a fund is on the secondary market and are in large part determined by the collective shortlists of the 1800+ buyers Setter Capital covers, which are conveyed directly or via SecondaryLink. See the last page for more details and limitations of the Setter Liquidity Rating.

Setter Price Report

Price Movement over the Last 5 Years



Broken Down By Type

Type	5 years prior (A)	4 years prior (B)	3 years prior (C)	2 years prior (D)	1 year prior (E)	Report Date (F)	Price change (E) to (F)
LBO*	95.34	95.25	90.98	94.07	95.63	97.10	1.55% ▲
VC*	86.11	81.00	83.01	78.42	73.99	82.12	10.99% ▲
Growth*	92.57	94.55	82.90	87.17	89.33	93.76	4.95% ▲
Distress-Credit*	93.47	88.14	85.67	91.82	95.23	87.52	-8.10% ▼
Mezzanine**	90.69	96.64	85.63	91.96	92.77	96.06	3.55% ▲
Special Situation**	88.83	95.00	86.38	80.93	94.64	96.29	1.74% ▲
Turnaround**	94.83	86.83	89.93	90.31	99.58	92.91	-6.70% ▼
Fund of Funds (PE)*	87.99	85.63	86.13	85.91	87.65	86.11	-1.76% ▼
Secondary Fund (PE)*	86.27	82.88	85.42	82.92	84.58	84.70	0.14% ▲
Cleantech**	66.00	74.67	59.60	68.44	67.36	72.90	8.22% ▲
Energy*	95.32	85.73	88.85	88.22	89.46	81.13	-9.31% ▼
Real Estate*	89.16	94.09	86.81	84.16	92.44	89.28	-3.43% ▼
Infrastructure*	90.92	93.42	85.86	98.54	86.96	95.35	9.65% ▲
Timber**	86.32	83.00	77.25	80.50	83.50	79.12	-5.25% ▼

** Prices are the average top prices of the 365 days preceding these dates.

**Starting Price and Ending Price are the average top prices of the 365 days preceding these two dates.

Setter Price Report

Recent Movement in Secondary Pricing

Broken Down By Type

	2 Years (A)	270-365 days (B)	180-270 days (C)	90-180 days (D)	Last 90 Days (E)	Last 30 Days (F)	90 Days Price Change (D) to (E)
LBO	94.07	95.53	96.90	96.89	97.10	95.66	0.22% ▲
VC	78.42	77.16	85.54	78.00	82.12	90.00	5.28% ▲
Growth	87.17	86.28	94.99	85.17	93.76	91.77	10.09% ▲
Distress-Credit	91.82	85.39	92.12	91.55	87.52	89.95	-4.40% ▼
Fund of Funds (PE)	85.91	83.30	84.08	84.22	86.11	82.67	2.24% ▲
Secondary Fund (PE)	82.92	82.00	94.75	85.85	84.70	77.75	-1.34% ▼
Energy	88.22	86.96	89.60	80.55	81.13	88.50	0.72% ▲
Real Estate	84.16	83.97	89.84	84.37	89.28	83.80	5.82% ▲
Infrastructure	98.54	94.88	98.62	99.21	95.35	88.92	-3.88% ▼

Broken Down By Geography

N. America	87.65	87.40	90.68	91.33	93.29	96.37	2.15% ▲
W. Europe	94.58	97.07	97.47	95.77	98.28	92.52	2.62% ▲
Global	89.20	90.79	89.28	87.91	88.40	85.66	0.55% ▲
Asia	79.91	79.47	85.34	81.88	79.01	77.73	-3.50% ▼
Other	83.00	79.18	91.50	83.59	86.28	82.36	3.21% ▲

Broken Down By Liquidity Rating

Excellent	98.49	97.41	98.86	97.62	97.80	97.61	0.18% ▲
Very Good	94.22	92.96	94.68	95.05	95.13	93.83	0.08% ▲
Good	87.92	86.27	92.69	89.85	92.53	89.93	2.99% ▲
Unrated	86.67	82.44	91.65	85.67	89.21	87.50	4.13% ▲
Average Price Rated	92.90	91.70	94.94	93.10	94.73	93.39	1.74% ▲
Average Price Unrated	86.67	82.44	91.65	85.67	89.21	87.50	4.13% ▲
All Funds	90.36	88.53	93.44	90.56	92.64	90.73	2.29% ▲

* areas are left blank when there is not enough data to draw a reliable average

Source of Price Data

This report summarizes the individual top secondary market prices Setter Capital records over specific time periods based on actual bids and estimates derived from the over 1800 buyers Setter covers. See below for the number of funds priced in each

Funds priced 0-30 days ago	225	Funds priced 180-270 days ago	726
Funds priced 0-90 days ago	762	Funds priced 270-365 days ago	408
Funds priced 90-180 days ago	526	Funds priced 2+ years ago	2474

Setter Price Report

Definitions

The Setter Liquidity Rating (SLR) is a subjective measure of the relative liquidity of non-redeemable alternative investment funds and is not a measure of the investment merits or quality of a fund. The SLR and number of Prime Buyers are determined by Setter Capital and rely in part on subjective assessments of: the seriousness, capacity and number of interested buyers for a fund and the ease of transfer. The SLR and number of Prime Buyers should not be relied upon to make any investment decision or to predict the future liquidity of a fund. Also, the SLR is not intended as a measure or indicator of the liquidity of a fund's underlying portfolio holdings. The SLR applies to an entire series of funds, or 'fund family', and individual funds within a fund family may be more or less illiquid than the SLR indicates. For instance, lightly funded funds or very old funds are often less liquid than funds that are greater than 30% funded or less than seven years old. Also, smaller interests and very large interests have fewer buyers with less liquidity. The liquidity of a fund and the SLR can change at any time, as demand for a fund family changes or transfer becomes more or less restrictive or Setter Capital re-evaluates or gains new insight into a fund's relative liquidity. See the article 'Setter Capital Liquidity Rating' for more details. The SLR is not provided as a service and Setter Capital, SecondaryLink and DiligenceLink therefore assume no responsibility for any losses alleged to be the result of the use of the SLR or for any purported reliance upon the rating. The SLR may be flawed and Setter Capital welcomes suggestions to improve its usefulness.

Disclaimer

By accepting this document, you agree to all the terms hereunder. This document has been provided to you by Setter Capital for information or discussion purposes only & is confidential and may not be copied or distributed, in whole or in part, to any third party without the prior written consent of Setter Capital. This document is not, & should not be construed as, marketing material for any investment opportunity, or an offer, solicitation or a recommendation to take any investment action, or participate in any investment strategy or sale of securities.

Actual price, number of buyers, process, or results may differ materially from those indicated in this document. Return data, prices, number of buyers, benchmarks and performance information contained herein are not indicative of any future results and may be out of date or inaccurate.

This document contains opinions, estimates, prices, ratings & forward-looking statements which are subject to various risks, changes & uncertainties. Setter Capital undertakes no obligation to update or revise ratings, prices & other information contained herein.

This document has been prepared without taking into account any party's objectives, financial situation or needs. This document should not be construed as legal, tax or investment advice; any investment action with respect to any investment opportunity that may be referred to herein should be made only after appropriate and independent due diligence.

Setter Capital has not independently verified any information provided or available to Setter. No representation, warranty or guarantee, express or implied, is made as to the accuracy, reasonableness or completeness of the information, observations, opinions, ratings and conclusions contained in this document. Setter Capital and their respective directors, employees or representatives expressly disclaim any responsibility or liability relating to any losses alleged to be the result of the use of or purported reliance upon this document, the Setter Liquidity Rating, or any of the information contained herein.

About Setter

Established in 2006, Setter Capital is a leading independent advisory firm specializing in providing liquidity solutions for fund managers and institutional investors in the secondary market for alternative investments. We serve a diverse institutional client base including some of the world's largest pensions, endowments, investment consultants and fund managers. To date, Setter Capital has completed over 500 transactions, representing more than \$25 billion in liquidity across venture capital, private equity, infrastructure, real estate, real asset, and hedge fund investments.

Setter Capital's mission is to make the secondary market more transparent and efficient for all market participants. To this end, Setter provides the market with complimentary secondary market research and analytical tools such as:

[The Setter Liquidity Rating™](#)

A unique rating system that allows buyers, sellers and creditors to assess the relative liquidity of over 7000 different fund families.

[The Setter Volume Report™ and the Setter Price Report™](#)

Two semi-annual reports that provide the most comprehensive and accurate assessments of the secondary market. Data is based on pricing of over 2000 funds and a survey of over two thirds of the most active secondary buyers globally.

[SecondaryLink.com™](#)

A professional network where over 5000 institutional LPs and GPs connect on primary due diligence and the secondary market.

Setter Capital Inc.
2 Bloor Street W. Suite 1700
Toronto, Ontario, Canada
+1 (416) 964-9555

www.settercapital.com